

Tributes and Appreciations

We very much appreciate the support we receive

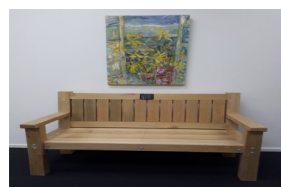
THANK YOU TO ALL OUR RECENT SUPPORTERS

Ravensdown for donating fertiliser and gifting staff a day to help plant daffodil bulbs (photo below)
NZ Certified Builders for donating four garden seats from their Apprenticeship Challenge (photo below)
L.J. for her donation from her head shave (photo below)
Jonty Harte-Seidl for his donation from his head shave
Charlotte and George from Auckland Point Primary School for baking cookies to honour their Nana
To all others who have recently supported us

THANK YOU TO OUR REGULAR SUPPORTERS

Stoke Tahunanui Rebus Club for making heart pillows, breast bags and hats (photo below)
Stoke Tahunanui Inner Wheel, Motueka Inner Wheel, Waimea Nelson Inner Wheel for making silky pillows
Sewing Group for making drainage bags for patients
Richmond Creative Fibre for making knitted knockers and hats
Knit and Natter Group from Summerset for knitting hats for patients
Pip Murdoch for making breast bags
Patricia Aldred for making breast bags
Mirren Stevens for knitting hats
Anne White for making breast bags
Anne Perrin for knitting hats and knitted knockers
Shirley Arnst for making Breast Softies
Lesley Mallon for making breast bags
Betty Van Rooyen who comes in every Tuesday to help with various jobs in the office
Robbie Francis and Wendy Cornish for painting and delivering our Hope Stones to the Chemo Clinic and Daffodil House in Christchurch (photo below)
Brad Jones who cleans our offices each week
Madison Turner from Saint Josephs School who comes in after school one day every week to help
Look Good Feel Better Volunteers
Good Bitches Baking for providing baking for our patients and support groups
Dilmah Teas for supplying tea for our support groups and events

And to all of our wonderful volunteers who help in so many ways – You help keep us doing what we do
Your enthusiasm is inspiring!



NZ Certified Builders



Kendall From Ravensdown



Daffodil Planting



L.J. Head Shave



Robbie Francis



Stoke Tahunanui Rebus Club



Have you liked us on Facebook?

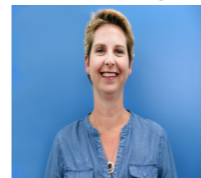
To keep up to date with what's happening at our Centre, please like our facebook page. We'd appreciate it if you can share our page also to help spread the word in our community.

July 2019

Nelson Cancer Society Newsletter



Welcome to our July newsletter. Winter is well and truly here which brings some lovely crisp and sunny days and with the shortest day behind us we can look forward to a little bit more daylight soon. We've had a busy few months in our region with another successful Heritage Homes Tour and Annual Charity Ball and we're looking forward to Daffodil Day, our annual flagship fundraiser. Please remember you are welcome to drop in and see us at anytime, we'd love to see you.



Michelle Hunt
Centre Manager



Cyndy Smith
Support Coordinator



Bronwyn Yelverton
Events & Communications



Jayne Marwick
Office & Volunteers



Glenys MacClellan
Accounts Payable

Heritage Homes Tour 2019

Our second Heritage Homes Tour was held on Sunday 7th April. This was another great day thanks to our heritage home and heritage building owners, the wonderful support from everyone who bought tickets and to our generous volunteers who helped on the day. It was an opportunity to view and learn the history of some of the beautiful heritage homes and buildings we have in Nelson. We will be holding this tour again in early April 2020 as part of the Heritage Festival. If you have a heritage home or building that you would like to have included in early April 2020 please let us know.



Annual Charity Ball 2019

Our Annual Charity Ball was held at The Trafalgar Centre on Saturday 22nd June. It was a fantastic night and a wonderful opportunity to support those in the Nelson/Tasman community affected by cancer. We raised a record amount from our live auction. Thank you to our principal sponsor Anjela Sharma and our other generous sponsors and to everyone who attended. Please book your tables early for our 2020 ball to avoid missing out from our website www.cancernelson.org.nz



Daffodil Day-Friday 30th August

Daffodil Day is our annual flagship fundraising event. Everything raised locally stays in our region to help those in our community affected by cancer.

Daffodil Day is a time when our whole community comes together to raise funds through our annual street appeal and this year you can get even more involved by Painting August Yellow. Businesses, schools, clubs and anyone who wants to get involved can Paint August Yellow to raise money for the Nelson/Tasman Cancer Society.

You can find out more about this at www.paintityellow.org.nz with some creative fundraising ideas including having a yellow dress up day, holding a bake sale, filling a jar with yellow jelly beans. You can also win some great prizes!



Contact us: 102 Hardy Street (next to Lone Star) or email info@cancernelson.org.nz or phone on 03 539 1137
<https://cancernelson.org.nz/> We would love to see you!

Jan Riley-Daffodil Day Volunteer Supporting Us For 30 Years

A big thank you to our amazing and long term volunteer Jan Riley, who has been involved in organising Daffodil Day in the Motueka region for 30 years!

Jan volunteers relentlessly throughout the year by facilitating our bi monthly Survivors and Thrivers group in Motueka and she is the Daffodil Day Area Co-ordinator, supported by our group of volunteers in Motueka. Jan is our all year round caretaker of the various daffodil growing areas. She organises the fertilising, planting, care and picking of the daffodils each year.



We are having a morning tea in Motueka on Friday 9th August at 10.40am at The Community House to celebrate Jan's 30 years of voluntary service to the Cancer Society Nelson/Tasman. Please let us know if you would like to attend info@cancernelson.org.nz phone (03)539 1137

Would You Like To Volunteer For Daffodil Day?

If you can help us we'd be very grateful, whether it be collecting, picking, bunching, delivering or supplying daffodils, or being on a street stand on Friday 30th or Saturday 31st August. Visit www.cancernelson.org.nz/volunteer/ or phone (03) 539 1137



Keep A Lookout For Our Vintage Car Club And Volunteers

Our local Vintage Car Club are supporting us again this year with several of their members and their cars helping our volunteers to deliver our corporate daffodil orders on Tuesday 27th August. If you know any businesses who would like to order corporate daffodils please ask them to contact us

Visit cancernelson.org.nz/daffodil-day-orders/ or phone (03) 539 1137



Vintage Car Club Rally-Sunday 25th August

The Vintage Car Club are holding their third Daffodil Day Car Rally on Sunday 25th August To find out more please contact Geoff Golding vintagenclassic@slingshot.o.nz Phone 03 929 5222

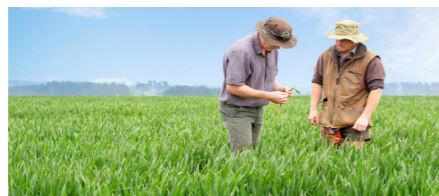


PGG Wrightson's Cash For Communities

We're pleased to be involved in PGG Wrightson's Cash for Communities scheme this year. It not only means support for our work, but a chance to communicate with our rural communities about key cancer prevention messages like sun safety.

Richard Weightman from PGG Wrightson told us, "We are delighted to be working with the Cancer Society to help raise funds and support all of the care the Cancer Society offer to the rural community".

If you're a PGG Wrightson client and want to support us please go to www.cashforcommunities.co.nz



Entertainment Book

You can now purchase the 2019/2020 Entertainment Book membership to get some great discounts at many restaurants, cafes and local attractions and activities in the Nelson, Christchurch and Canterbury regions including Ashburton, Timaru, Blenheim, Tasman and more. If you purchase the digital app you can share this on two devices so you can share it with family and friends.

We receive 20% (\$14) from every membership sold.

You can purchase from the link on our website www.entertainmentbook.co.nz/order-



Banana Box

Thank you to everyone who has bought products from Banana Box, an online fundraiser selling everyday grocery products at great prices. Up to 10% of what you spend will go to Cancer Society Nelson. The donation does not cost you an extra cent as it comes from Banana Box's pocket, not yours. New products have been added since their first launch. Visit www.bananabox.nz



Share My Pet

Lili and Dave from Share My Pet are offering anyone undergoing treatment or recovering from cancer in NZ, free membership to their website. Through the website you can arrange for pet care with a trustworthy member of your community while you are undergoing treatment. Share My Pet could also help you to connect with a pet for companionship and love if you are recovering from treatment. Visit www.sharemypet.co.nz



April & July School Holiday Programmes

Our families had the opportunity to enjoy orienteering, archery and an argo ride at Cable Bay Adventure Park on our April school holiday programme. In July our families enjoyed arty fun with Lizl Matthewson and made family totems to take home. Visit www.cancernelson.org.nz/news/



Support Groups Up Coming Dates

We have a number of regular support groups including our Survivors & Thrivers, Bosom Buddies, Carers and Colorectal support groups. For more information please email info@cancernelson.org.nz or phone (03) 539 1137

Bosom Buddies

Aug 12 @ 10:00 am - 12:00 pm

Sep 9 @ 7:00 pm - 8:30 pm

Survivors & Thrivers Motueka

July 16 @ 10:00 am - 12:00 pm

Sept 17 @ 10:00am - 12:00 pm-Guest Speaker NMDHB Psychologist Helen Butler-Coping With Uncertainty And Change

Survivors & Thrivers Nelson

Aug 13 @ 10:00 am - 12:00 pm

Oct 8 @ 10:00 am - 12:00 pm-Guest Speaker NMDHB Psychologist Helen Butler-Coping With Uncertainty And Change

Survivors & Thrivers Takaka

July 31 @ 12:00 pm - 2:00pm

Sept 25 @ 12:00 pm - 2:00 pm

Consultation Meeting Takaka

July 31 @ 2:00pm - 3:00pm-Prostate Cancer - Join us to discuss information/support needs for Golden Bay people

Carers Group

Aug 7 @ 7:00pm-8:30pm-Guest Speaker Petra Stolz Baskett, Haematology/Oncologist Nurse at Nelson Hospital

Sep 4 @ 7:00pm-8:30pm

Colorectal Group

Aug 14 @ 7:30pm-8:30pm

Sep 11 @ 7:30pm-8:30pm

